

OLT 38 SMT



The information, specifications, and illustrations in this manual are on the basis of information available at the time it was written. The specifications, torque values, pressures of operation, measurements, adjustments, illustrations, and other items can change at any time. These changes can affect the service of the given product.

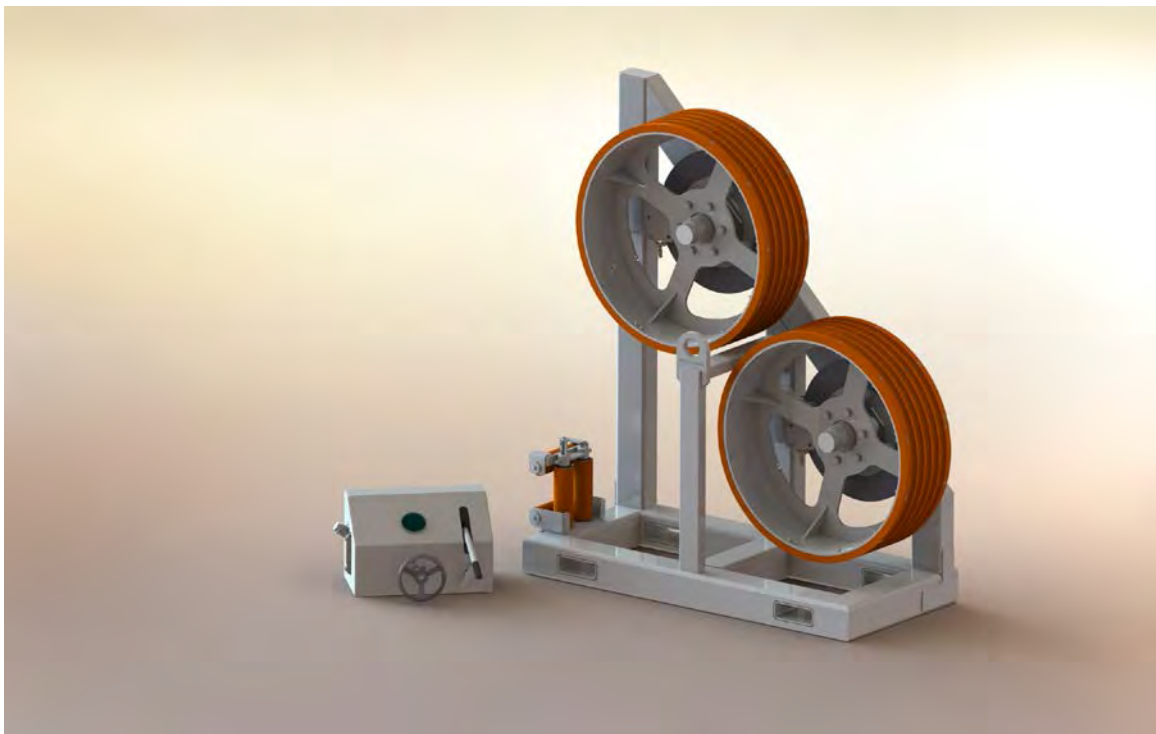
For the complete and most current information, contact:

Hogg & Davis, Inc
P.O. Box 405 / 3800 Eagle Loop
Odell, OR 97044-0405
541-354-1001
541-354-1080 Fax

**For most recent manual
version please visit:
www.hoggdavis.com**

OLT 38 SMT **Overhead Line Bullwheel Tensioner**

Product Warnings	- 3 -
General Specifications	- 4 -
Operating Instructions	- 5 -
Setup on the Job	- 5 -
Setup of the unit	- 5 -
Position of unit	- 5 -
Jack Stands / Outriggers	- 6 -
Tie Down/ Brake/ Chock	- 6 -
Load the Bull wheels	- 6 -
TENSIONING PROCEDURE	- 7 -
LUBRICATION AND MAINTENANCE	- 8 -
Items to be inspected	- 8 -
Lubrication Schedule	- 8 -
15-15 Warranty	- 9 -
Parts and other manufacturer manuals	- 10 -



OLT 38 SMT Overhead Line Bullwheel Tensioner

Product Warnings

⚠ DANGER

**AN UNTRAINED OPERATOR
SUBJECTS HIMSELF AND
OTHERS TO
DEATH OR SERIOUS INJURY**

**YOU MUST NOT OPERATE
THIS MACHINE UNLESS**

- You have been trained in the safe operation of this machine.
- You have read, understand and follow the safety and operating recommendations contained in the machine manufacturer's manuals, your employer's work rules and applicable government regulations.
- You are sure the machine is operating properly and has been inspected and maintained in accordance with the manufacturer's manuals.
- You are sure that all safety signs, guards and other safety features are in place and in proper condition.

© H&D, Inc. 1999

⚠ DANGER



**REACHING INTO REEL AREA
OR CONTACTING TURNING
REEL OR MOVING LINE
DURING OPERATION MAY
RESULT IN
DEATH OR SERIOUS INJURY**

© H&D, Inc. 1999

⚡ DANGER

**ELECTROCUTION HAZARD EXISTS
WHEN PULLING LINE OR
CONDUCTOR IS NEAR ENERGIZED
LINES. MAKE SURE MACHINE IS
PROPERLY GROUNDED AND
OPERATOR IS PROPERLY
PROTECTED.**

© H&D, Inc. 1999

⚠ DANGER



**JACKSTAND AND OUTRIGGER
CONTACT WILL CAUSE SERIOUS
CRUSHING INJURY.**

STAND CLEAR

⚠ WARNING



**Escaping fluid under pressure
can penetrate skin causing
serious injury.**

Relieve pressure before disconnecting hydraulic lines. Keep away from leaks and pin holes. Use a piece of cardboard or paper to search for leaks. Do not use your hand.

Fluid injected into skin must be surgically removed within a few hours by a doctor familiar with this type injury or gangrene will result.

© H&D, Inc. 1999

These warning labels and others like it are placed in critical areas of the machine. The warnings are to be read and fully understood prior to operation of the unit.

OLT 38 SMT **Overhead Line Bullwheel Tensioner**

General Specifications

This unit is designed to tension overhead cable/conductor at a constant.

- 38 inch 5 Groove Bull wheels
- 1.5 inch Groove
- 3000 lbs Maximum Tension

Unit Dimensions:

67" Long
30" Wide
79.25" Tall

Apporox. 2,200 lbs

OLT 38 SMT Overhead Line Bullwheel Tensioner

Operating Instructions

All persons operating this machine must read and understand this manual as well as the operating, danger, and warning decals placed on the machine. Failure to read and understand these items subjects the operator and others to **DEATH or SERIOUS INJURY**.

Operators shall make themselves familiar with the placement of the following operating and safety features of the machine.

- Bull wheel Pressure / Tension Control (2)

Setup on the Job

Setup of the unit

Position of unit

Position the unit with the centerline of the trailers inline with the pull. Place the unit at a minimum of two times the height of the first block.



OLT 38 SMT Overhead Line Bullwheel Tensioner

Jack Stands / Outriggers

Actuate the rear outriggers to stabilize the trailer. Attempt to level the trailer as much as possible. The outriggers have the ability to raise the tires from the ground, but as a rule they should be used to stabilize the load across all contact points on the ground, i.e. Jack stands, tires, front tongue jack stand.

Tie Down/ Brake/ Chock

Chock all wheels and set brakes (if applicable). It should be noted that a fully loaded trailer may exceed the tension desired during the pull. As the pull progresses, the weight of the trailer decreases, therefore proper securing procedures should be followed during operation. This unit is equipped with tie – down eyes for staking to the ground and it is recommended that the unit stay secured to the tow vehicle whenever possible.

Load the Bull wheels

Reeve conductor through the captive fairlead assembly and under and around the first groove in the lower Bull wheel. The conductor will be reeved around the entire Bull wheel assemblies and exits towards the first block off the upper Bull wheel groove.

It is less difficult if rope were to be reeved through the bull wheels instead of conductor. Placed the pulling rope in the bull wheels and slowly allow the rope to be pulled, thus reeving the conductor under power. When loading the bull wheels in this manner SLOW is the maximum speed.



"Rugged Dependability."

© COPYRIGHT 2013 HOGG & DAVIS, INC



OLT 38 SMT
Overhead Line Bullwheel Tensioner

TENSIONING PROCEDURE

Adjust reel brake to provide tail tension to conductor.

***PROPER ADJUSTMENT OF TAIL TENSION IS A CRITICAL PART OF THE CONDUCTOR TENSIONING PROCESS.** Too much tension can cause under wraps in the conductor reel and too little tension can produce slippage of the conductor across the Bull wheels and possible "groove hopping" during the pull.

Refer to the performance chart for proper hydraulic pressure as it directly relates to conductor tension. ***This chart is located on the control panel of the unit.***

Turn in Bull wheel actuator to approx 30 lbs above desired tension. As pull begins, turn actuator out slowly until Bull wheels begin to payout. As pull progresses, it may be necessary to adjust Bull wheel tension as needed. Also during the pull process it will be necessary to adjust reel payout tension as the reel empties.

As pull comes to an end, increase Bull wheel pressure to hold conductor at desired sag. *Safety off the conductor to the rear of trailer or other stationary device before leaving unit.*

BULLWHEEL BRAKES ARE NOT A PROPER HOLDING DEVICE.

IF MACHINE IS TO BE USED FOR FIBRE OPTIC INSTALLATION, REFER TO THE CABLE MANUFACTURER FOR PROPER TENSIONING TECHNIQUES. FAILURE TO CONSULT MANUFACTURER MAY DAMAGE CABLE AND VOID WARRANTY.



"Rugged Dependability."

© COPYRIGHT 2013 HOGG & DAVIS, INC



OLT 38 SMT
Overhead Line Bullwheel Tensioner

LUBRICATION AND MAINTENANCE

This unit has no set PM schedule. This unit should be visually inspected prior to each use while repairing any and all discrepancies prior to use.

Items to be inspected prior to use are:

- Safety Chains (wear / damage)
- All welds and seams
- Loose or missing fasteners (bolts, nuts, set screws)
- Loose or leaking hydraulic hoses
- Damages or worn hydraulic hoses
- Brake calipers (loose fittings, hoses, worn linings)
- Brake Pads
- Urethane Bull wheel linings
- Brake rotors

Lubrication Schedule

- Bull wheel Bearings (daily before each use)



"Rugged Dependability."

© COPYRIGHT 2013 HOGG & DAVIS, INC



OLT 38 SMT Overhead Line Bullwheel Tensioner

15-15 Warranty

Hogg and Davis, Inc. warrants its trailers against defects in material or workmanship for period of 15 months from the date of shipment from Hogg and Davis, Inc. (see General Conditions & Exceptions). Hogg and Davis, Inc. will replace, free of charge, F.O.B. Hogg and Davis, Inc. factory, such parts or parts thereof, that in their judgment have proven defective. Additionally, Hogg and Davis, Inc. will pay reasonable and customary labor charges when defective part is replaced, installed or repaired by a fully authorized Hogg and Davis, Inc. trailer dealer at his facility.

Warranty credit will be issued only upon receipt and inspection of defective parts of at the Hogg and Davis, Inc. factory.

Hogg and Davis, Inc. warrants its trailer main frame assemblies (except pintle eyes or other towing attachments, spindles and axles) against defects in material or workmanship for a period of **15 years** from the date of shipment from Hogg and Davis, Inc. (see General Conditions & Exceptions). Hogg and Davis, Inc. shall replace or repair, in a manner as it shall determine, free of charge, F.O.B. factory, any parts or parts thereof, that in its judgment have proven defective. Additionally, Hogg and Davis, Inc. will pay reasonable and customary labor charges when defective part is replaces, installed or repaired by a fully authorized Hogg and Davis, Inc. trailer dealer at his facility

General Conditions & Exceptions

All warranties, options and representations made herein shall apply only provide such equipment shall not have been subject to misuse, negligence or accident and has been operated in accordance with factory approved procedures. This warranty does not obligate Hogg and Davis, Inc. or its authorized dealers to bear the cost of parts obtained from or labor performed by unauthorized sources. Nor does it obligate Hogg and Davis, Inc. **or its** authorized dealers to bear the cost of transportation of parts or equipment for repair or **replacement purposes**. This warranty is in lieu of any other warranty, expressed **or implied**, or any other obligation or liability on the part of Hogg and Davis, Inc and no persons or entity is authorized to make any representation beyond those stated herein.

Hogg and Davis, Inc. shall not be held liable for consequential damage of any kind. Hogg and Davis, Inc. also reserves the right to make changes and improvements in its products without incurring any obligation to install any such changes or improvements upon its products previously manufactured.

The above warranty shall not be misconstrued to mean warranty of tires, clutch, transmission assemblies or customer requested accessory equipment other than the warranty extended by their respective manufactures to Hogg and Davis, Inc. In addition, friction, drive rollers are warranted only to extent of bonding failure. All warranties, options and representations made herein are applicable to the original end-user of the product and are not sellable or transferable in any manner.



"Rugged Dependability."

© COPYRIGHT 2013 HOGG & DAVIS, INC



OLT 38 SMT
Overhead Line Bullwheel Tensioner

Parts and other manufacturer manuals

The Following drawings are for part identification only. Please reference the unit V.I.N. number and the corresponding part number when ordering.

The information, specifications, and illustrations in this manual are on the basis of information available at the time it was written. The specifications, torque values, pressures of operation, measurements, adjustments, illustrations, and other items can change at any time. These changes can affect the service of the given product.

For the complete and most current information, contact:

Hogg & Davis, Inc
P.O. Box 405 / 3800 Eagle Loop
Odell, OR 97044-0405
541-354-1001
541-354-1080 Fax
www.hoggdavis.com



"Rugged Dependability."

© COPYRIGHT 2013 HOGG & DAVIS, INC

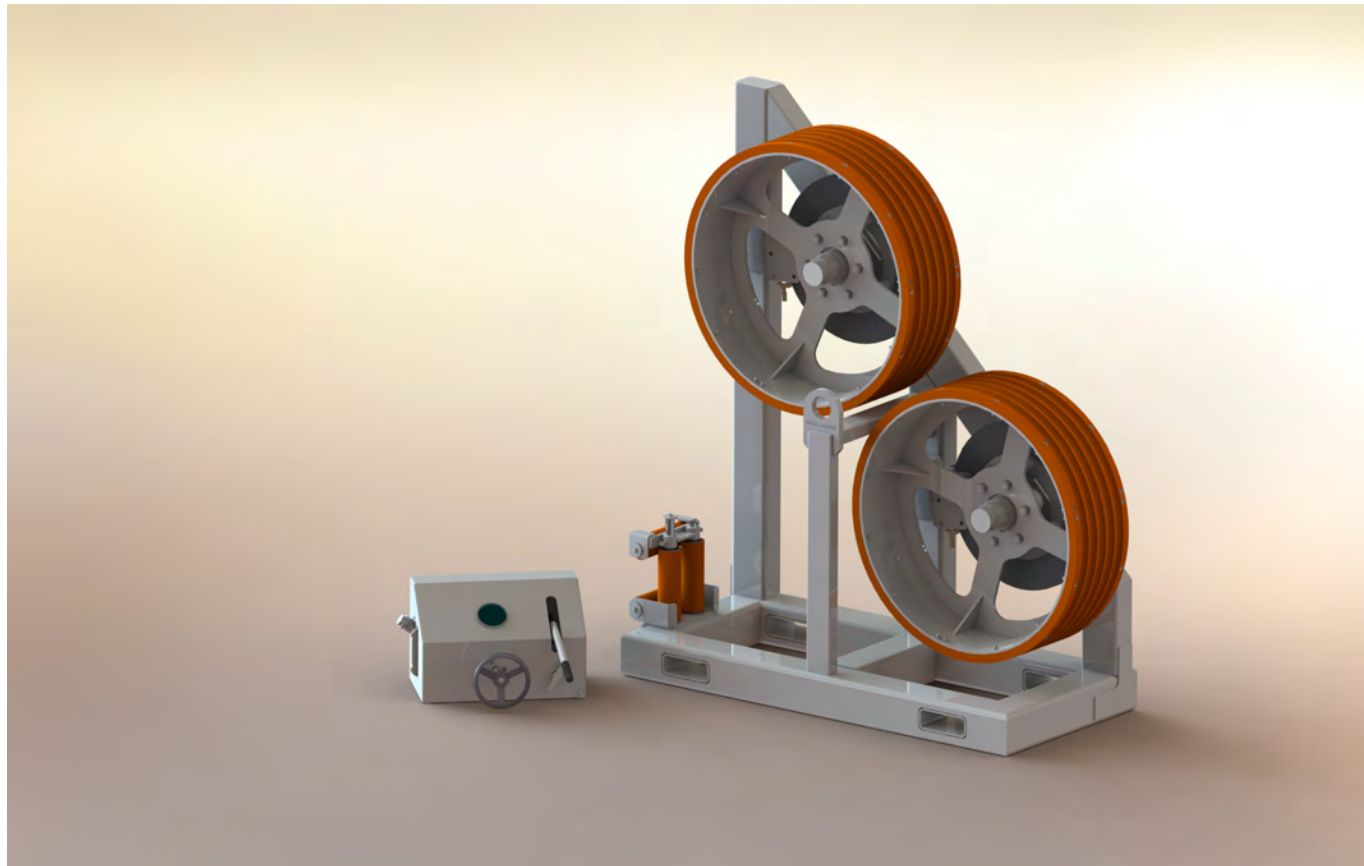


OLT 38 SMT
Overhead Line Bullwheel Tensioner

NOTES:



Parts Manual



The information, specifications, and illustrations in this manual are on the basis of information available at the time it was written. The specifications, torque values, pressures of operation, measurements, adjustments, illustrations, and other items can change at any time. These changes can affect the service of the given product.

For the complete and most current information, contact:

Hogg & Davis, Inc
P.O. Box 405 / 3800 Eagle Loop
Odell, OR 97044-0405
541-354-1001
541-354-1080 Fax

For most recent manual
version please visit:
www.hoggdavis.com



"Rugged Dependability."

© COPYRIGHT 2013 HOGG & DAVIS, INC



ver. 1.0

Table of Contents

<i>Isometric View</i>	1
<i>Bullwheel</i>	2
<i>Brake Calipers HD</i>	3
<i>Brake Cylinder</i>	4
<i>Control Panel</i>	5
<i>Fairlead</i>	6
<i>Brake Bleeding Inst.</i>	7

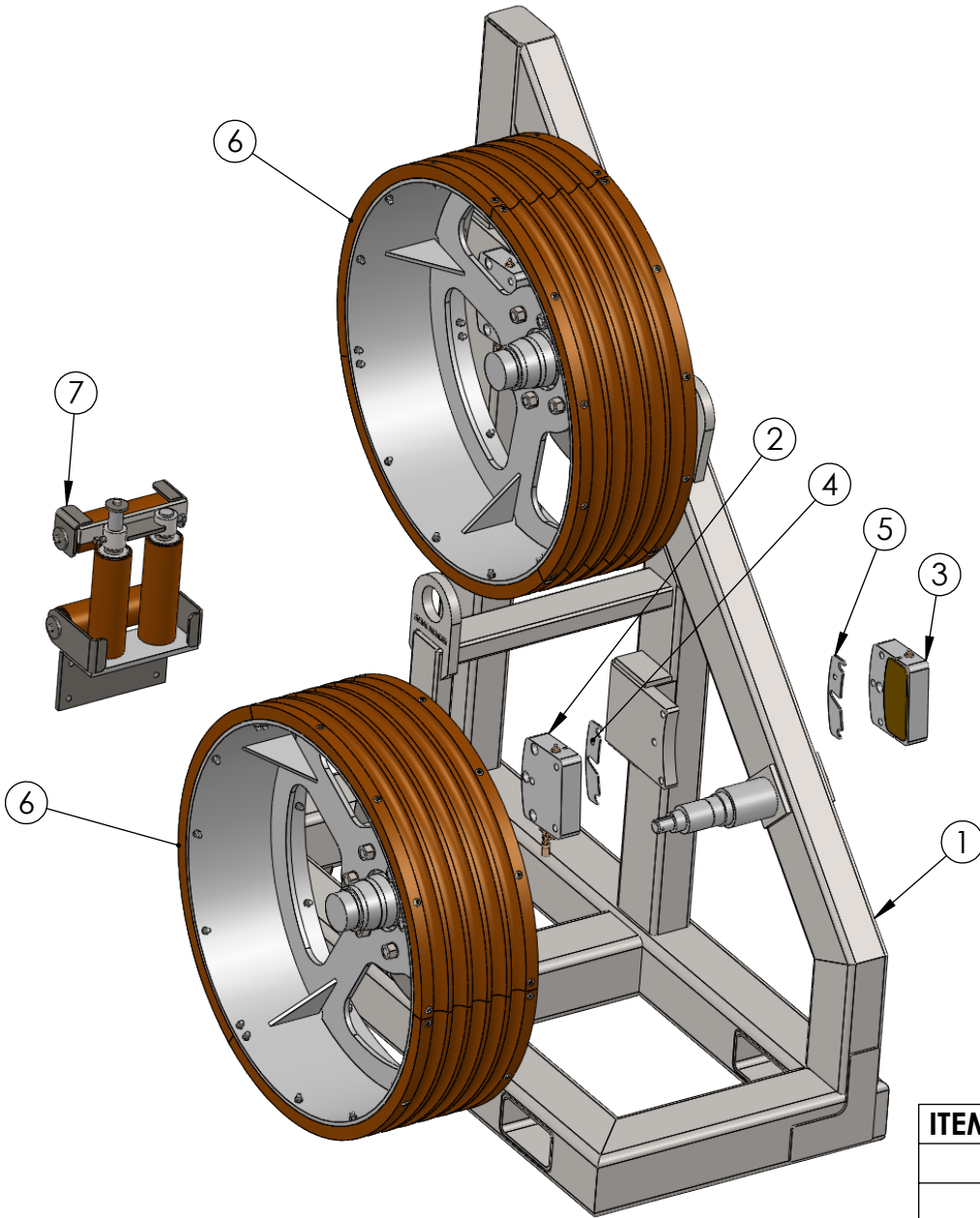
If items look different from the parts breakdown please call for assistance. (541)354-1001



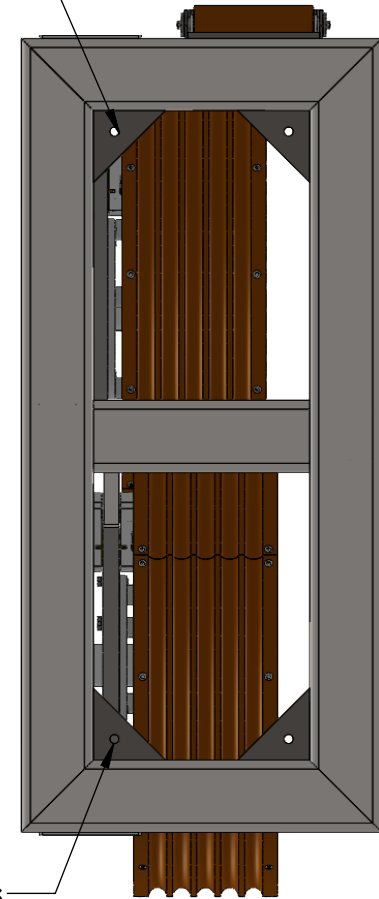
"Rugged Dependability."

© COPYRIGHT 2013 HOGG & DAVIS, INC





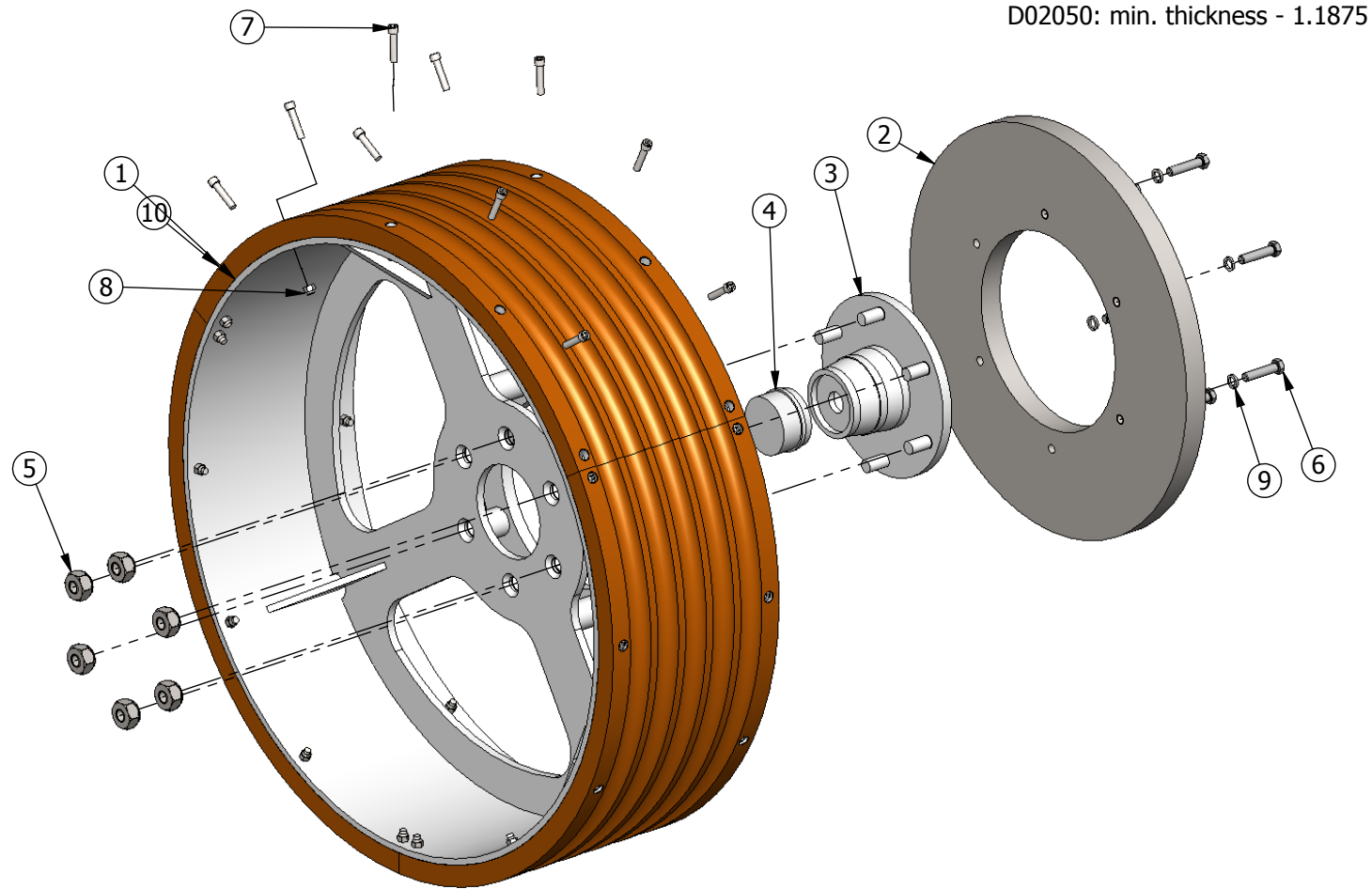
Mount Locations



Mount Locations

ITEM NO.	PART NUMBER	DESCRIPTION	QTY.
1	F09099	OLT38SMT Frame	1
2	C04037-A	Brake Caliper Assy.	2
3	C04038-B	Brake Caliper Assy.	2
4	S14066	Spacer 11ga	2
5	S14067	Spacer 3/16	2
6	OLT36BW	Bullwheel Assy	2
7	OLTF	F09108A	1

If items look different from the parts breakdown please call for assistance. (541)354-1001

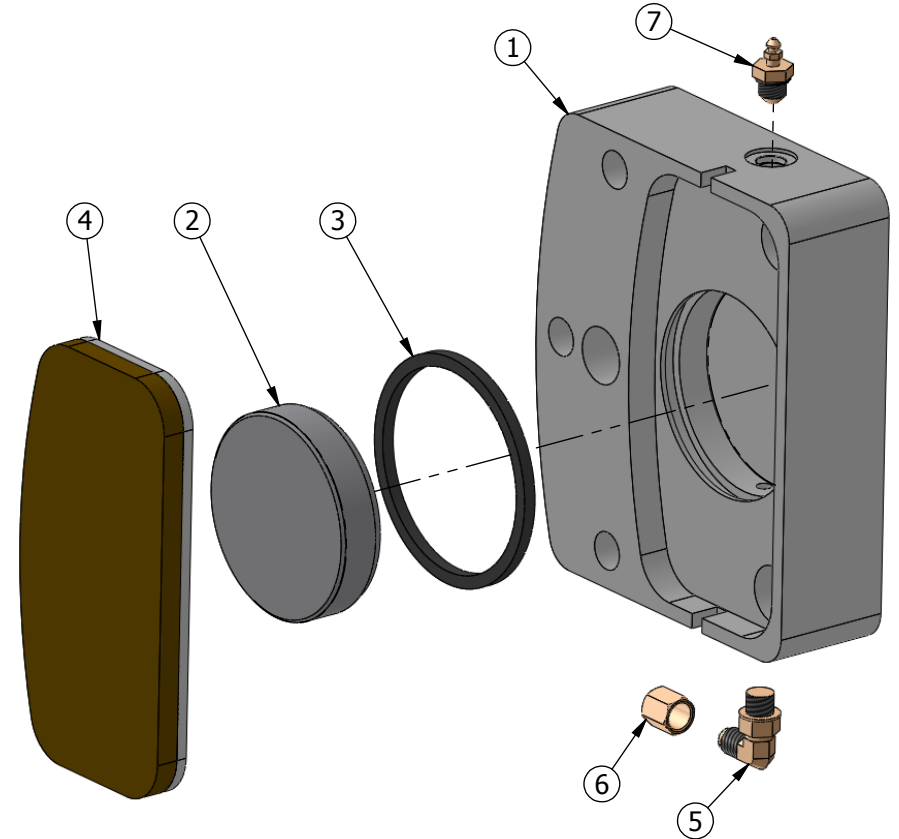
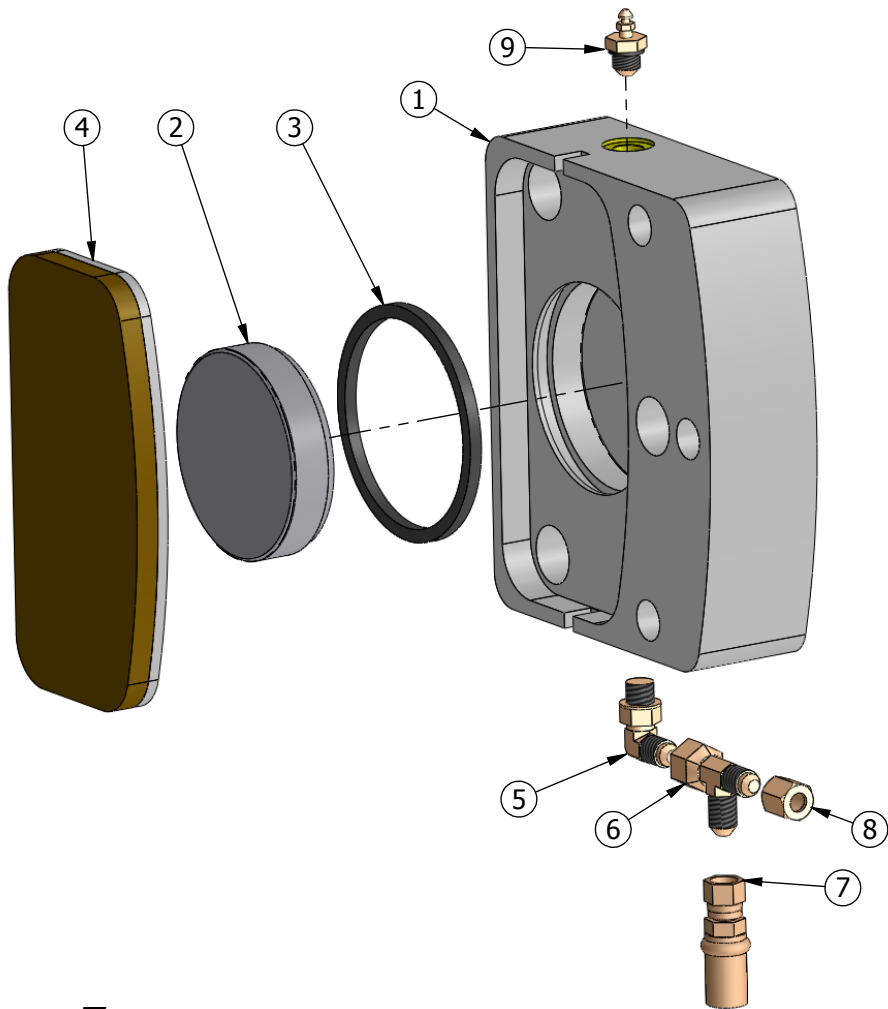


Note: Quantities are PER Bullwheel, (2) Bullwheels per unit

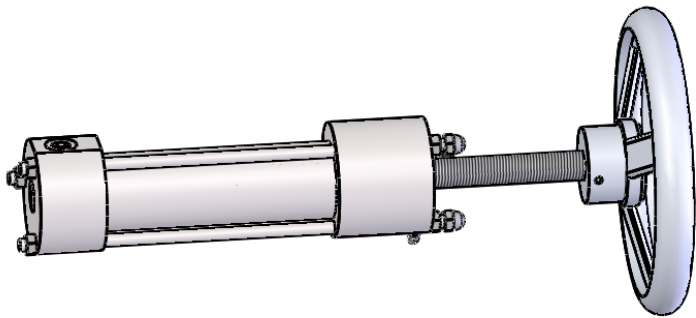
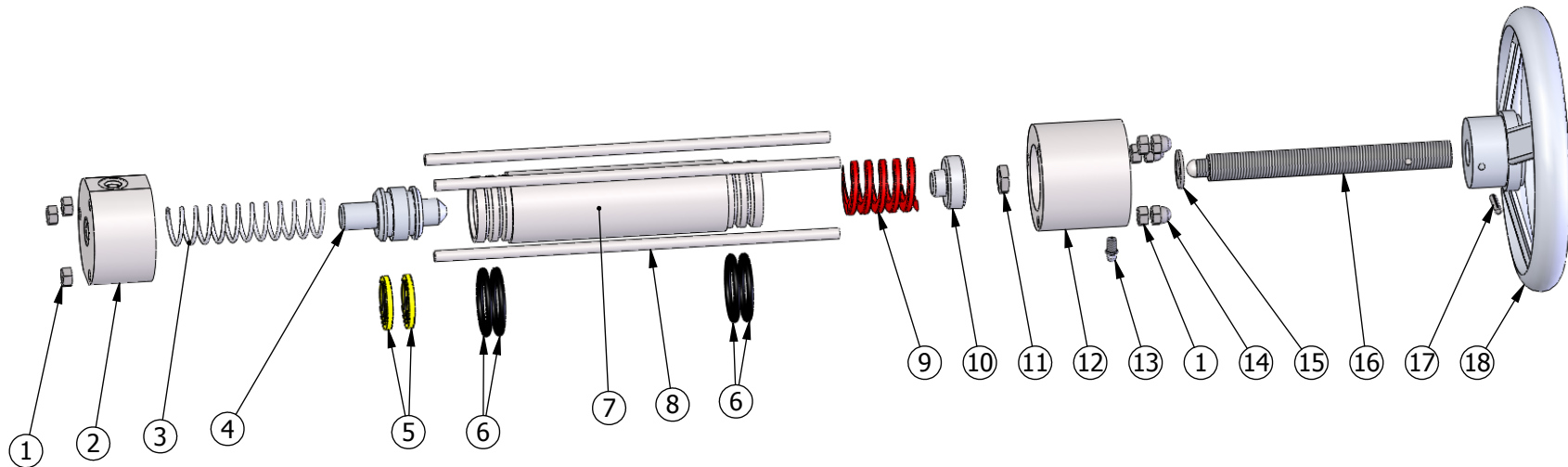
ITEM NO.	PART NUMBER	DESCRIPTION	QTY.
1	C27003	36" BULLWHEEL CORE	1
2	D02050	1 1/2" 304 SS Plate	1
3	H09035	HUB	1
4	C06095	GREASE CAP	1
5	N04045	Nut, 3/4-16 RH Lug	6
6	B11361	Bolt, Hex 1/2-13 x 2 1/4 G5 z	6
7	S04248	Screw, SHCS 3/8"-16 x 1-3/4"	30
8	N04545	Nut, Hx Nylock® 3/8"-16	30
9	W01565	Washer, Split Lock 1/2"zinc	6
10	L05005	Liner, Urethane	3

ITEM NO.	PART NUMBER	DESCRIPTION	QTY.
1	C04037	Caliper Half, Countersink	1
2	P08004	3-3/8" Piston	1
3	O01225	O-Ring, Piston	1
4	P01012	Pad, 7" HD brake caliper	1
5	F05725	Fitting, 4-4 90° SAE	1
6	F05067	-4 Swivel Nut Run T	1
7	F05813	-4 FJIC 90 hose fittng	1
8	F05300	Fitting, -4 nut	1
9	B18005	Bleader, -4 o-ring	1

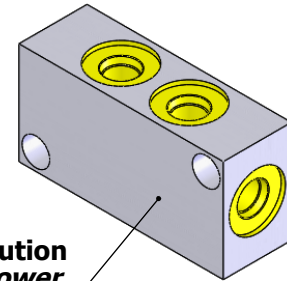
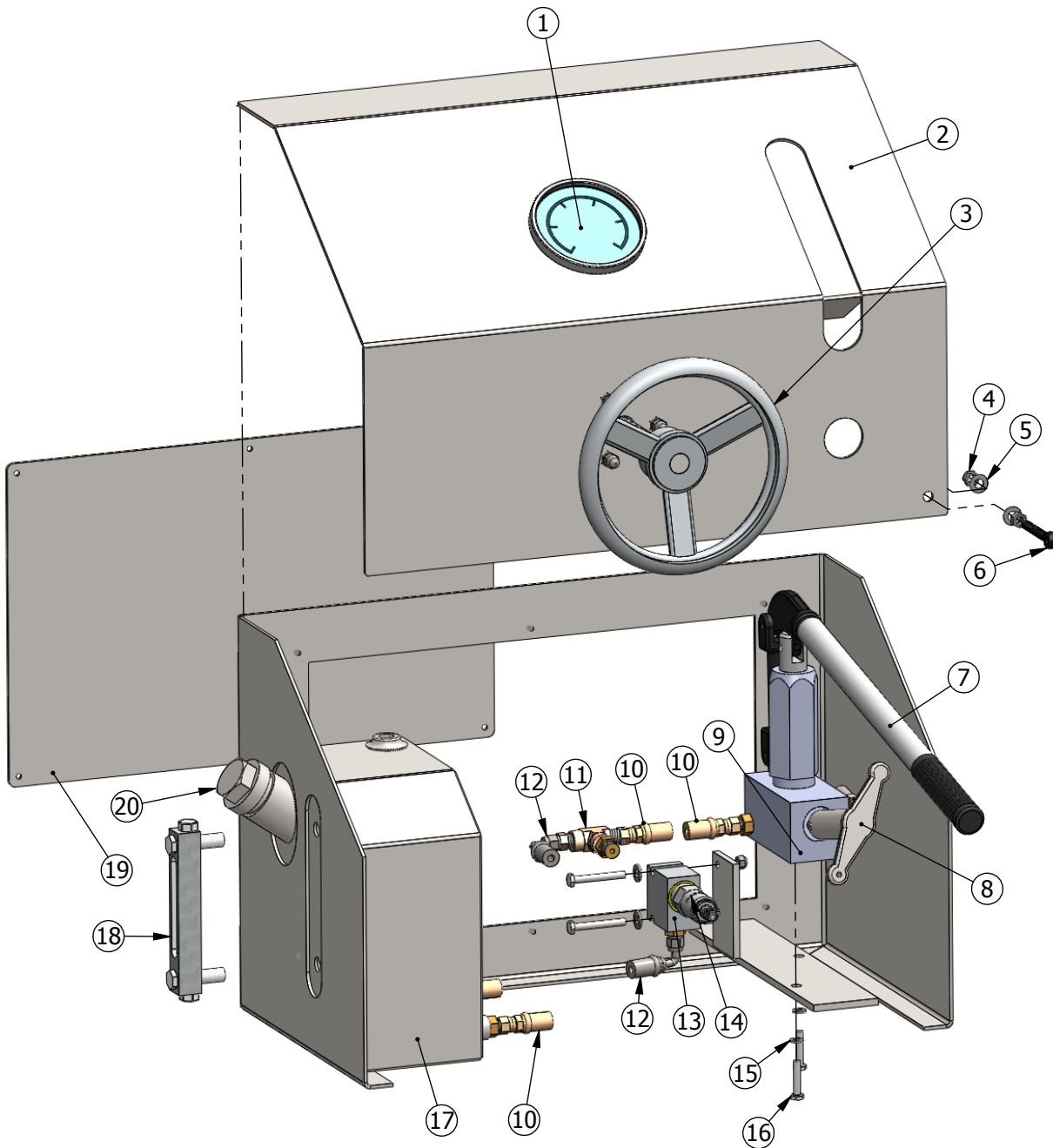
ITEM NO.	PART NUMBER	DESCRIPTION	QTY.
1	C04038	Caliper Half, Threaded	1
2	P08004	3-3/8" Piston	1
3	O01225	O-Ring, Piston	1
4	P01012	Pad, 7" HD brake caliper	1
5	F05725	Fitting, 4-4 90° SAE	1
6	F05300	Fitting, -4 nut	1
7	B18005	Bleader, -4 o-ring	1



If items look different from the parts breakdown please call for assistance. (541)354-1001



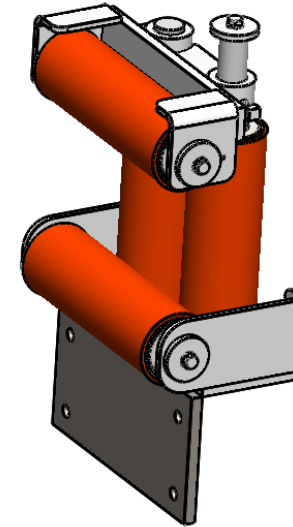
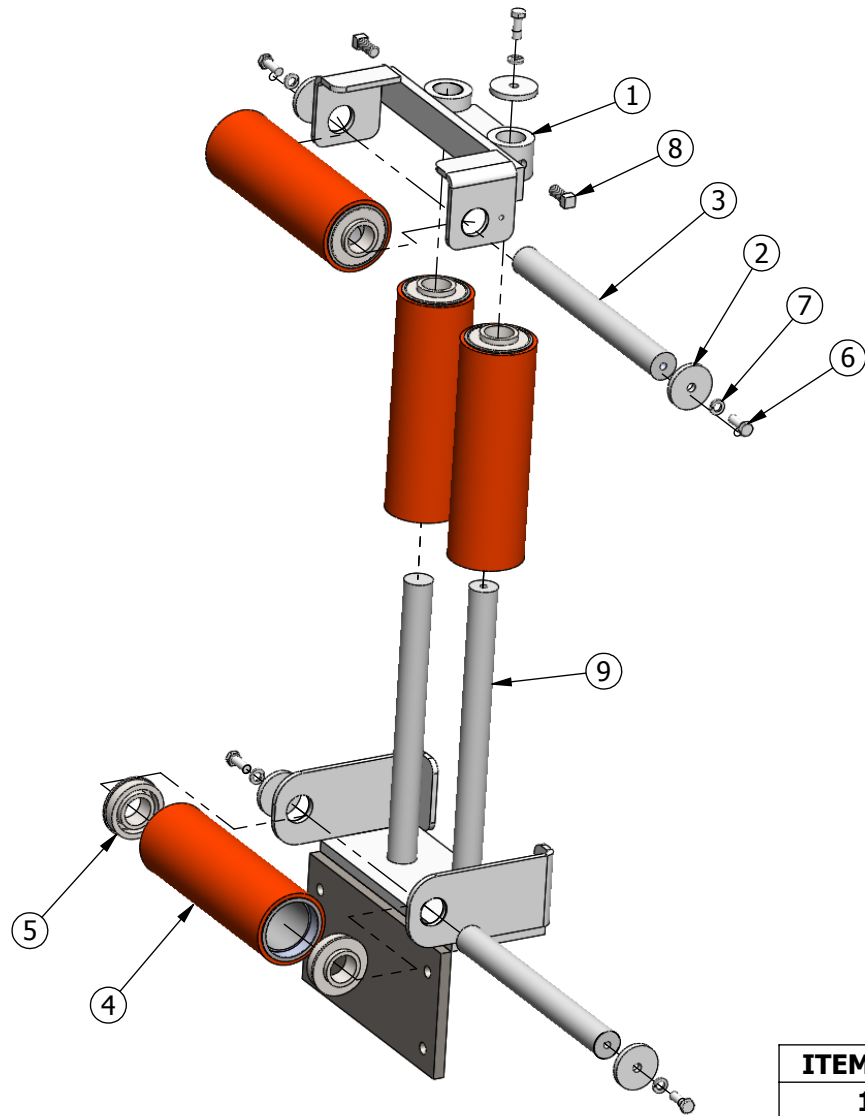
ITEM NO.	PART NUMBER	DESCRIPTION	QTY.
1	N04107	Nut Hex 5/16"-18	6
2	C06009	Bar round 3" 1018	1
3	S28022	Return Spring	1
4	P08017	Piston, Aluminum two groove	1
5	O01061	Seal	2
6	O01060	O-Ring	4
7	H08003	Cylinder Tube	1
8	R19007	Bar round 5/16" 1018	3
9	S28021	Spring	1
10	P08016	2" Aluminum RB	1
11	N04039	Nut Hex Jam 1/2-20	1
12	C06012	Bar round 3" 1018	1
13	F05630	Fitting, 1/4"-28 Zerk	1
14	N04103	Nut Hex 5/16"-18 Acorn	3
15	W01005	Washer, Flat SAE 1/2"	1
16	S04006-001	Bar 3/4"-8 acme thread	1
17	P06186	Pin, Roll 3/16 "x 1"	1
18	H02060	Handle, 8" Dia.	1



**M04050
Manifold, Distribution
Located Above Lower
Bullwheel Brake**

ITEM NO.	PART NUMBER	DESCRIPTION	QTY.
1	G02007	Gauge, 4" 600PSI	1
2	S08064	Panel Enclosure	1
3	C32004	Brake Cylinder	1
4	N04107	Nut Hex 5/16"-18	2
5	W01235	Washer Flat SAE 5/16	2
6	E05011	Bolt, Eye	1
7	H02026	Handle, Hydraulic pump	1
8	H02030	Handle, Hyd Pump Release	1
9	P20016	Pump, Manual	1
10	F05813	-4 FJIC 90 hose fittng	5
11	F05728	Fitting, Street Tee 4-4-4	1
12	F05600	-4 FJIC 90 Hose Fitting	5
13	M04051	Manifold, Aluminum	1
14	V02077	Valve, Vickers Relief	1
15	W01525	Washer Split Lock 1/4	2
16	B11325	Bolt Hx head 1/4-20x1-1/4	2
17	T01011	Tank, Hyd oil	1
18	G02046	Gauge, Hyd oil level	1
19	C29036	Cover, Rear	1
20	F05212	Plug, 1"	1

If items look different from the parts breakdown please call for assistance. (541)354-1001



ITEM NO.	PART NUMBER	DESCRIPTION	QTY.
1	B15899	Fairlead Top Bracket	1
2	C06041	Cap, End	5
3	S43129	Shaft, Roller	2
4	R20028	Roller, 10" w/ Polyurethane Coating	4
5	B07110	Bearing, Roller	8
6	B11342	Bolt Hx head 3/8-16x1	5
7	W01545	Washer, Split Lock 3/8"	5
8	S04475	Screw, Set Sq Head 1/2 x 1	2
9	F09108	Base	1

Step 4: crack fitting to let any trapped air out
not all systems may have a gauge

Step 3: crack bleeder and
pump oil through system until
no more air comes out of caliper

Step 5: pump system up to @ 500psi and look for
leaks. When finished, let the pressure in the system
reach zero, then disconnect oil supply.

Step 2: attach pressurized hydraulic oil
source to connector if needed

ISO46 hydraulic oil

Step 1: back handle all the way
out, turn in 1-1/2 turns.

C28072 male
quick connect
fitting

Pad set - P01012
pads @3/8" thick

